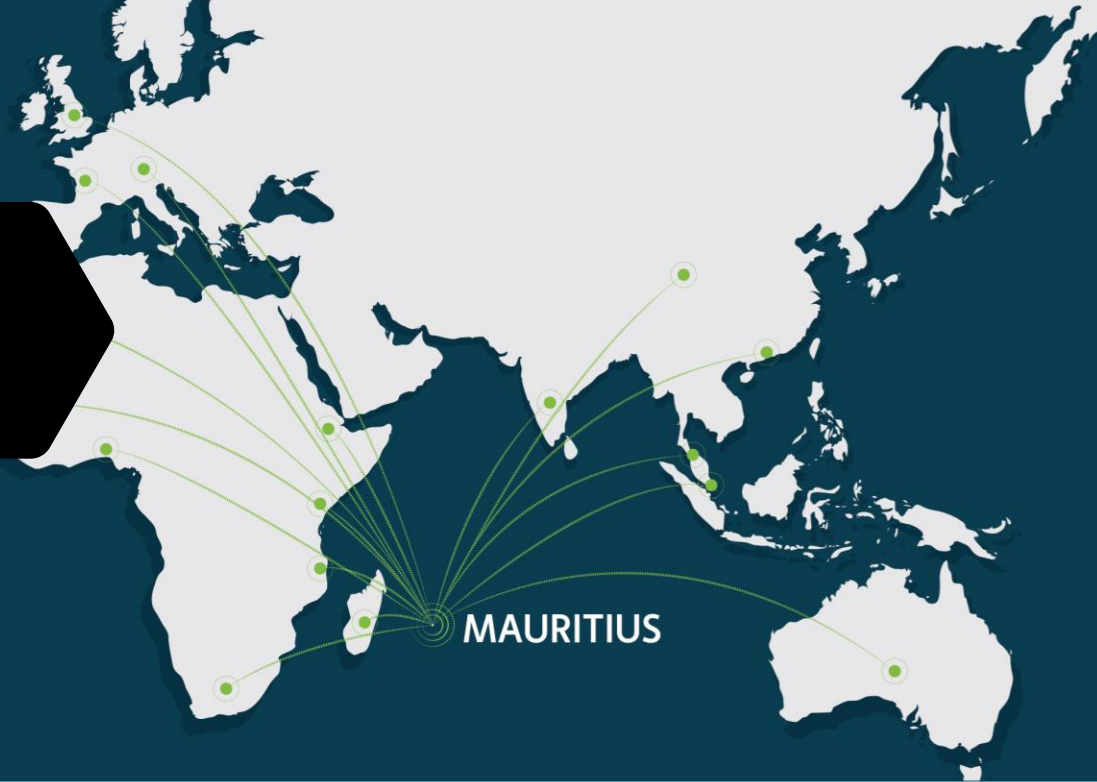
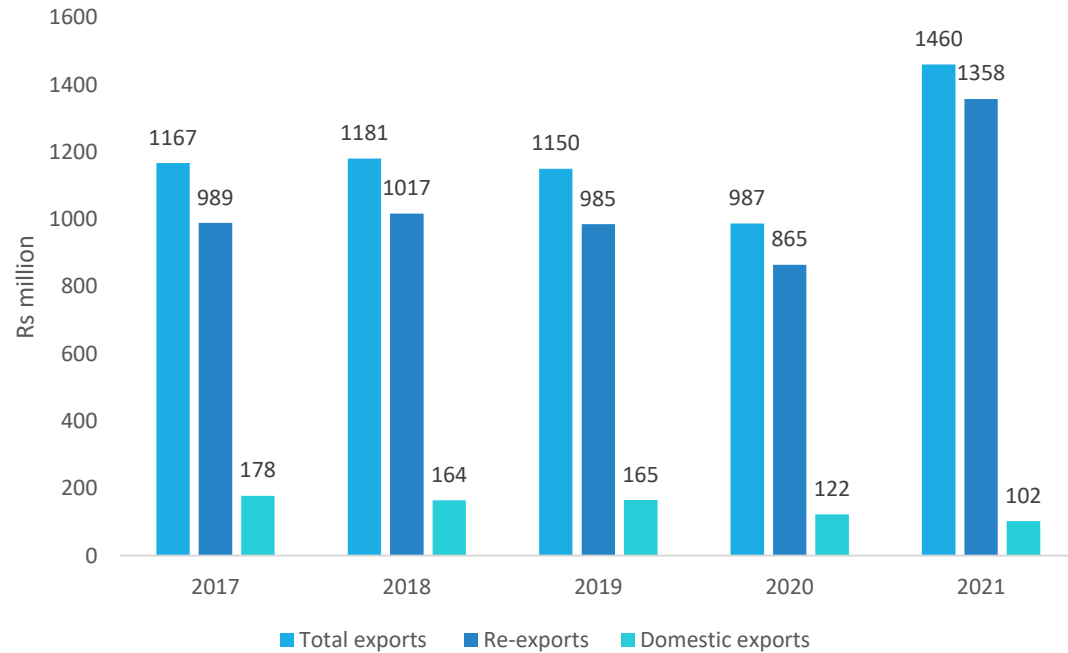


# INVESTMENT OPPORTUNITIES IN THE MAURITIUS PHARMA INDUSTRY



# Snapshot of the Pharma Industry

Export of Pharmaceuticals (CH 30)



Annual Imports of pharma products

• MUR 9.9 Bn  
(prov. 2021)

Main products imported

▪ Antibiotic and non-antibiotic medicines, vaccines, health supplements, Cardiovascular drugs, Antidiabetics.

Main import markets

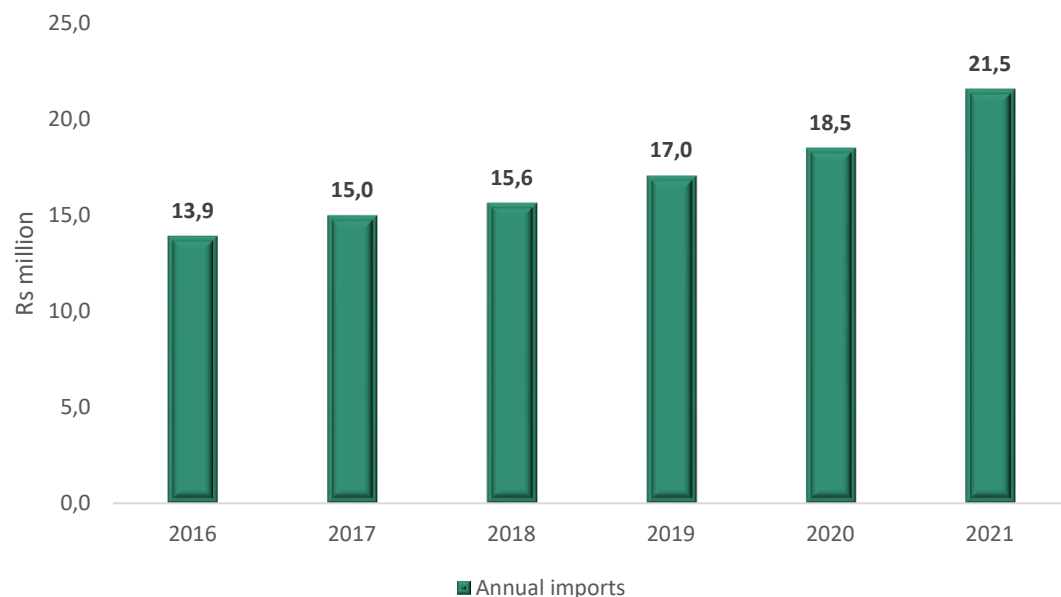
▪ India, France, Germany, Turkey, UK, Switzerland & South Africa

## Pharmacy Act 1983

- Pharmacy Board : Regulatory body for import, manufacture & sales of of any drug, poison, dangerous drug & psychotropic substance
- Licences: Factory building Licence & Licence to manufacture
- Main Requirement : Industrial pharmacist (10 Yrs experience)

# Opportunities in Africa

## Africa Pharmaceutical Product Imports (USD billion)



Source: ITC

- ❖ Africa annual import of pharmaceutical products: USD 21.5 Billion (2021)
- ❖ Main items imported : Antibiotic and non-antibiotic medicines, vaccines, immunological products, veterinary medicines, Cardiovascular drugs, Antidiabetics, etc.
- ❖ Main import markets: India, France,, Switzerland, Belgium, Netherlands

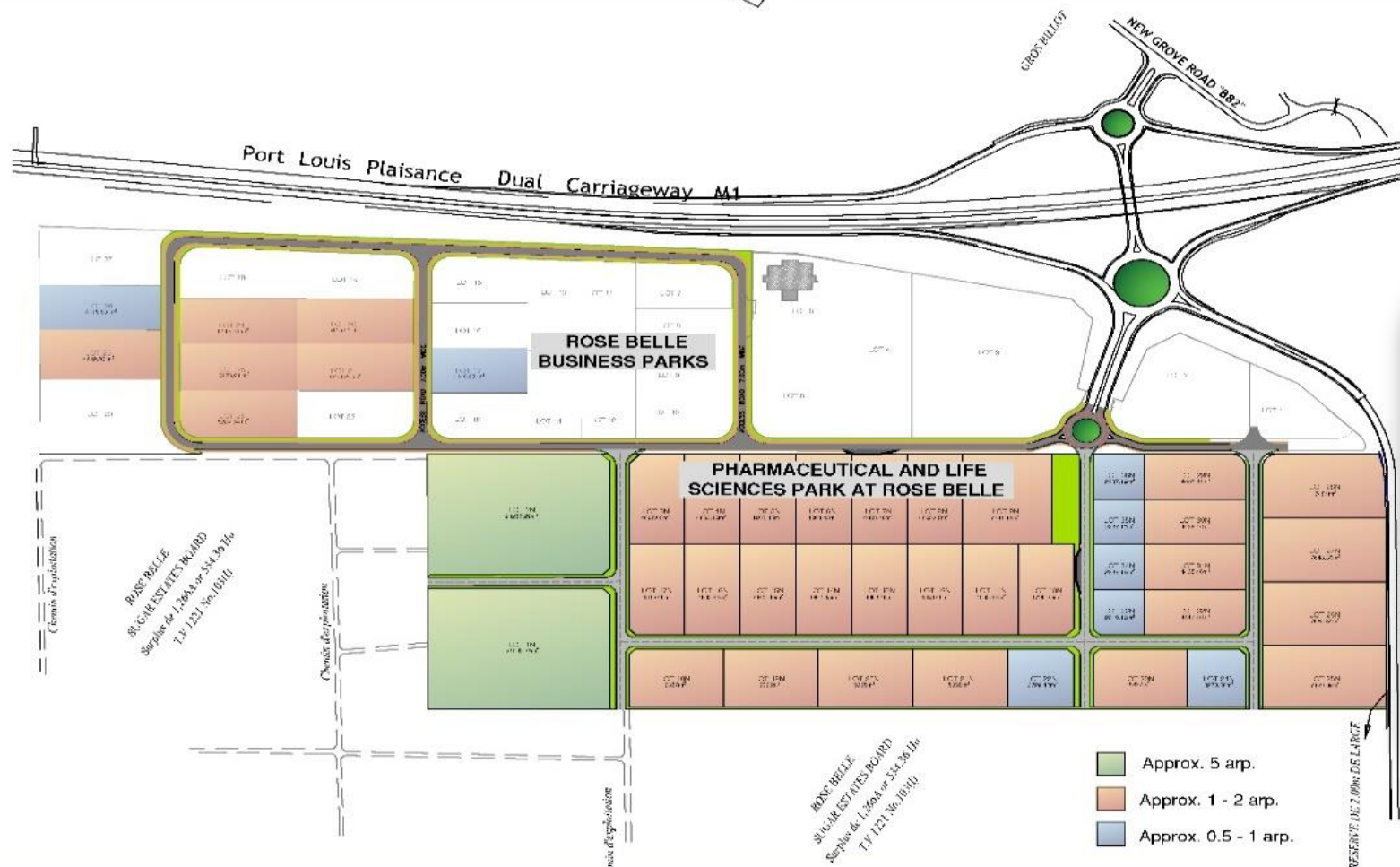
Mauritius  
Exports  
(2021)

Rs 135 M worth pharmaceutical products to Africa mainly under HS 3004



# Pharmaceutical and Life Sciences Park – Rose Belle

23.6 hectares of land available for lease



## Proposed activities

- Drug Manufacturing
- Medical Devices, instruments & products
- Cosmeceuticals
- Biotechnology
- R& D and Testing Labs
- Product Sterilization Facilities
- Support services

# Incentives to Pharma Manufacturing Activities



## **SPECIFIC INCENTIVES**

### Eligible for a Premium Investor Certificate

- Package of incentives as recommended by Technical Committee and approval of the Minister of Finance, Economic Planning and Development

## **GENERAL INCENTIVES**

- 8-year income tax-holiday
- Waiver on Building and Land Use Permit fees for construction of Pharma manufacturing factory
- 3 % corporate tax on profits (*after 8 years*)
- No import duties on equipment and raw material
- No export duties in Mauritius
- Investment Tax Credit of 15% per year for three years for investment in high-tech manufacturing equipment
- Full tax credit on the costs of acquisition of patents
- 30% Margin of Preference
- Accelerated depreciation of 50% on machinery, equipment and construction of industrial premises dedicated to manufacturing activities
- Accelerated depreciation of 50 % per annum on capital expenditure incurred on R&D
- VAT on raw materials is payable at customs clearance but reimbursable on exports
- Double deduction in respect of qualifying expenditure on R&D until income year 2021-2022



# Other Incentives

Acquisition of property for business purposes, by a non-citizen investor, is authorized

---

No Registration Duty and Land Transfer Tax

---

Exemption from payment of land conversion tax for the setting up of industrial enterprises

---

Streamlined procedures for the recruitment of expatriates and foreign labour with an 8-year work permit policy for expatriates in the manufacturing sector

---

Refund of 60% on Air Freight Cost for export to Europe, USA, Africa (including Madagascar), Japan, Australia, Canada, Vietnam & the Middle-East

---

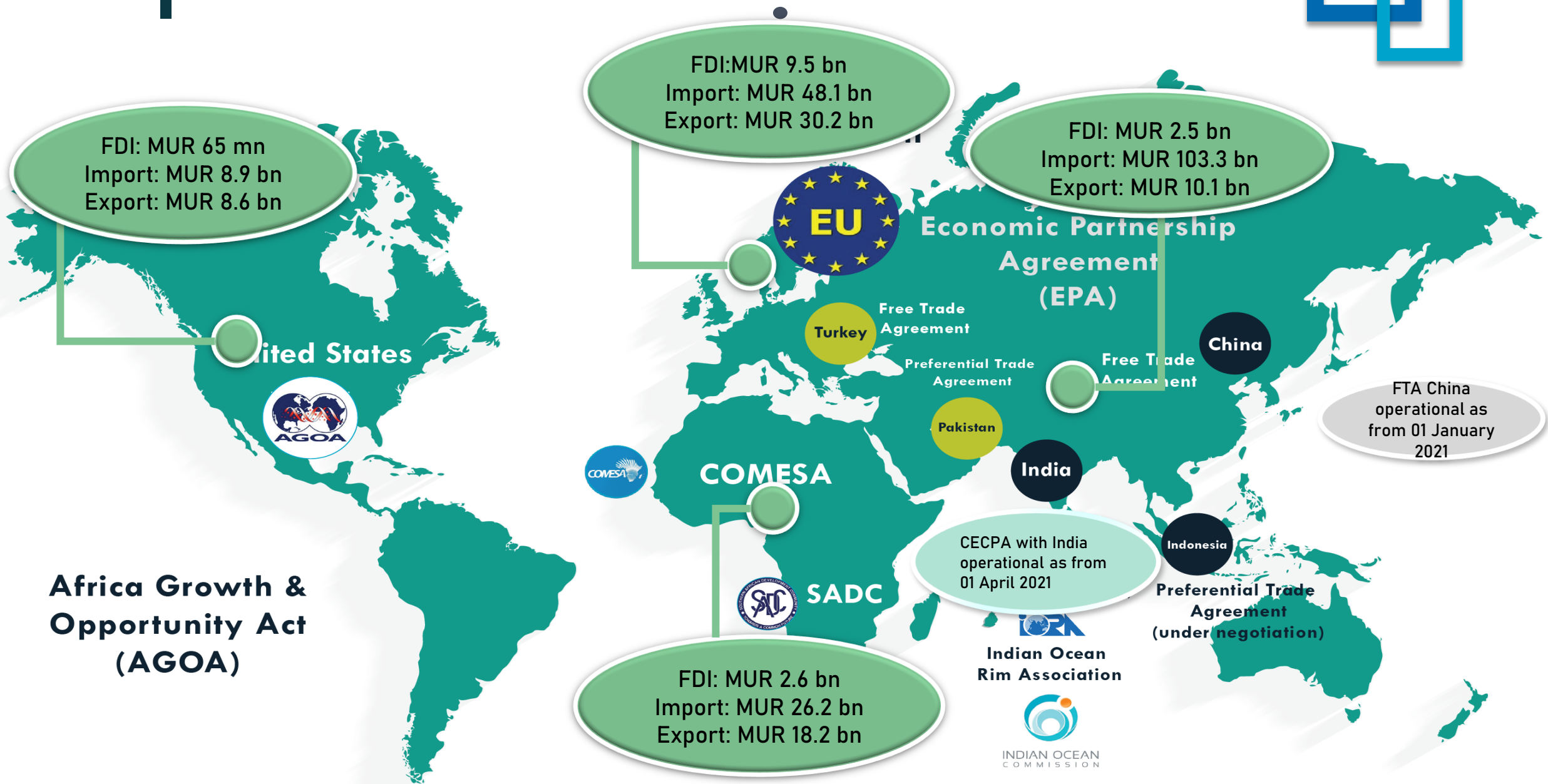
Freight Rebate Scheme

*Refund of 25% on Basic Freight Cost (the maximum of USD 300 per 20T-feet container and USD 600 per 40T-feet container)*

*Eligible ports: 47 ports in 19 countries in Africa*



# Preferential Market Access



# Competitive Cost of Doing Business

## Indicative Rental costs

Industrial Land	USD 7500-12,500 per acre per annum
Factory space	USD 0.38- 0.75 per ft2 per month (depending on floor levels & regions)

## Labour Costs

Level	Average Monthly Salary (USD)
Unskilled and Entry level workers	264 (National Minimum Wage) - 375
Technical level	375-625
Engineers	625-1125
Manager	1125-2000
Higher management	2000+

## Social Charges

CSG	Category of employee	Employee Contribution (% of basic wages)	NAEmployer Contribution (% of basic wages)
	Salary ≤ USD 1,250	1.5	3
	Salary > USD 1,250	3	6
NSF	All	1	2.5
Training Levy	All	NA	1.5

## Electricity: Industrial Tarrifs

Tariff	Running Charge per kWh	Demand Charge per kVA	Minimum Charge
323	USD 0.074	USD 3.40 per kVA of Maximum Demand, subject to a minimum of 20 kVA	A sum equal to the highest Demand Charge paid in any one of the preceding 6 months of account

## Telecommunication costs

Service	Service Description	Speed (Mbps)	Monthly Rental USD(Excl. VAT)
Business Boost	Broadband Internet access for small businesses (2 TB capacity)	20/10	31.25
Superfast Broadband	Unlimited broadband Internet access with dynamic IP address	10	250
Global IP Premium	Direct Internet access with public and fixed IP address	2	788.75
Global MPLS VPN	Dedicated Internet connection with secure IP / MPLS address - MT POPS Mauritius - Europe	2	1350

1 USD = MUR 40